



MONMOUTH COUNTY

DISTRICT SOLID WASTE MANAGEMENT PLAN

Proposed Amendment to the Solid Waste Management Plan

Increase in Volume of Class "A" Materials at Mazza Recycling Services, Ltd.

Public Hearing Scheduled:

1:00 pm- Tuesday, November 21, 2017

Monmouth County Hall of Records

Freeholders Meeting Room

One East Main Street

Freehold, NJ 07728

**PROPOSED AMENDMENT TO THE MONMOUTH COUNTY  
DISTRICT SOLID WASTE MANAGEMENT PLAN**

The Monmouth County Solid Waste Plan is prepared in accordance with the requirements of the New Jersey Solid Waste Management Act (N.J.S.A. 13: 1E-1 et. seq.) by the Monmouth County Board of Chosen Freeholders, in consultation with the County Solid Waste Advisory Council. Any plan for new or expanded solid waste facilities, as well as certain types of recycling facilities, must first be included in the County Solid Waste Management Plan, before any permit/ application may be submitted to the New Jersey Department of Environmental Protection (NJDEP) Office of Solid Waste for its technical review and approval (if required).

The procedure required for amending the Solid Waste Plan requires the distribution of copies to each municipality in the County, which was done via electronic mail. Copies are also provided to other interested parties on request, particularly those who offered comment at, or had attended Solid Waste Advisory Council meetings at which the Plan Amendment had been discussed. Copies were also distributed to the branches of the Monmouth County library system. Public notices were also put in the Asbury Park Press on October 31, 2017 and November 7, 2017, as per N.J.S.A. 13:1E-1 et seq). After public notice and formal hearing before the Board of Chosen Freeholders, the Board may adopt or reject the plan amendment in whole or in part. The adopted Plan Amendment and public hearing transcript, accompanied by any written testimony or other exhibits submitted to the County in connection with the hearing, is then submitted to the NJDEP Commissioner. After consultation with the appropriate divisions of the NJDEP and other state agencies, the NJDEP Commissioner approves, rejects or modifies the amendment, within 150 days of its receipt by the State. The amendment is then “certified” as submitted or modified, in a written decision issued by the NJDEP Commissioner.

Although the County sets the general tone and direction of the Solid Waste Plan, and may set certain conditions for approval of the waste management operations and facilities, the final decision on its specific provisions rests with the NJDEP Commissioner. Since its first publication and certification in 1979, there have been numerous amendments. Copies of each of the plan amendments, public hearing transcripts, NJDEP Certifications, as well as other background information, are available for public inspection from the Solid Waste Coordinator at the Monmouth County Department of Public Works and Engineering.

**SUMMARY OF PLAN AMENDMENT BEING CONSIDERED**

October, 2017

Mazza Recycling Services, Ltd. is proposing to increase the volume of Class “A” recyclables which they accept. Class “A” recyclables are defined as source separated non-putrescible recyclable material consisting of metal, glass, paper, plastic containers, and corrugated and other cardboard. This material is not processed at this facility in any way. It is simply temporarily stored onsite and transferred to a different facility, out of the area, which is capable of processing the material further for marketing domestically and internationally. Class “A” recycling facilities do not require permits issued by the NJDEP.

## Background for Mazza Recycling Services, LTD.

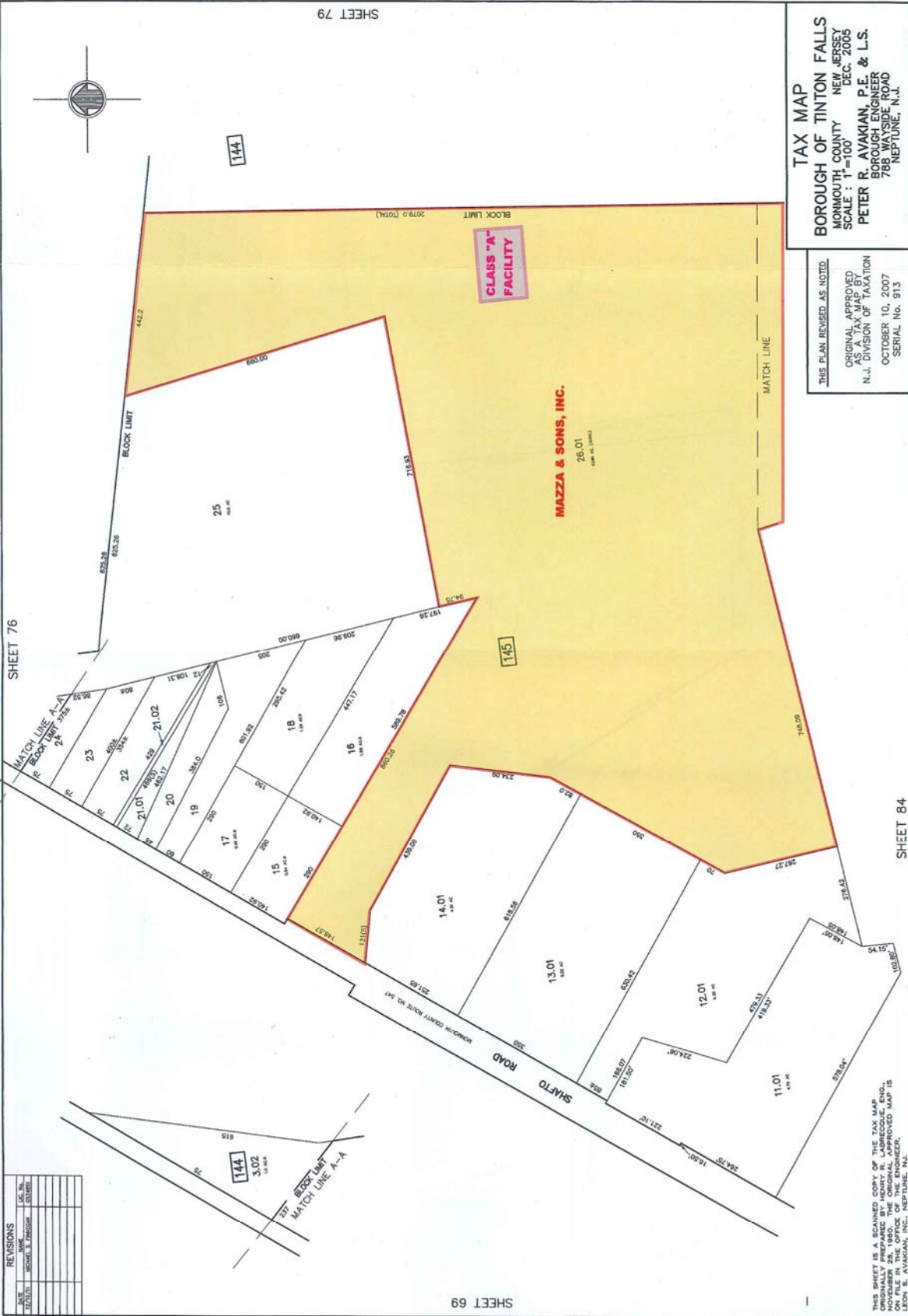
The Mazza Recycling Services, Ltd. facility is located at 3230 Shafto Road (Lot 26.01, Block 145) in Tinton Falls, Monmouth County. The property is 52.05 acres in size. This property presently serves as the home for an approved Class “B” recycling center which is permitted to receive, store, and process tree stumps, wood (unpainted and non-chemically treated), brush, concrete, asphalt, and tires. The parcel is also home to a permitted solid waste transfer station. This transfer station accepts, stores, and transfers out type 13 solid waste and type 13C solid waste. Type 13 waste consists of large items of waste material, such as appliances and furniture. Type 13C waste consist of construction and demolition wastes that result from construction, remodeling, repair, and demolition operations on houses, commercial buildings, pavements, and other structures. Although there is no state licensure or permitting to accept Class “A” recyclables, the facility must be approved in the Monmouth County Solid Waste Management Plan to do so. The Mazza facility is presently permitted, in the Monmouth County Solid Waste Management Plan, to accept one hundred and ten (110) tons of this material. The facilities at this property are permitted to operate during the hours of 6:00 am to 5:00 pm Monday through Friday and from 6:00 am to 1:00 pm on Saturdays (from May 1<sup>st</sup> through September 15<sup>th</sup>) and 7:00 am to 4:00 pm on Monday through Friday and on Saturdays from 7:00 am to 1:00 pm (from September 16 through April 30).

The present layout of the Mazza property is illustrated on the tax map presented on the following pages. All lot numbers and site boundaries are included on this recent site plan. The site is relatively isolated from any residential land uses. There is one driveway that is used to utilize the Mazza Property, which comes into the facility off Shafto Road.

An application package was received by the Monmouth County Solid Waste Coordinator on November 4, 2016. A copy of the application package was provided to the Tinton Falls Municipal Clerk on November 9, 2016. A copy of the package was also forwarded to the County’s Engineering Division for review and comment on potential traffic issues.

During review, multiple agencies including borough land use officials, Township fire officials, Township code officials, and Monmouth County Engineering officials were all in agreement with the proposed plan. The applicant will also be required to install a traffic signal at the intersection of the facility driveway (“Mazza Driveway” and Shafto Road (County Highway 547) to help alleviate issues of increased traffic due to this facility. A Developer’s Agreement between the applicant and the County of Monmouth will be executed in conjunction with this Solid Waste Plan Amendment to substantiate all of the improvements that have been agreed upon, including the traffic signal. The facility will not be able to accept the additional tonnage until the traffic signal is verified and approved by the Monmouth County Division of Engineering.

This application for the inclusion of the proposed increase in tonnage and the progress of the plans for the project was heard at multiple Solid Waste Advisory Council (SWAC) meetings. At the September 28, 2017 SWAC meeting, this application was recommended to the Board of Chosen Freeholders for inclusion into the Monmouth County Solid Waste Plan. It will be sent to the Monmouth County Board of Chosen Freeholders for a public hearing and vote to be included in the Monmouth County Solid Waste Management Plan. This will be on the Freeholder calendar for the November 21, 2017 meeting. The public hearing will be at 1:00 pm in the Hall of Records located at 1 East Main Street in Freehold and the Freeholder vote on the Solid Waste Management Plan amendment will take place at 5:00 pm at the Freeholders regular meeting which will be held in the in the Hall of Records located at 1 East Main Street in Freehold



DATE	REVISIONS	DATE	BY
10/20/01	MAJOR 3.0000	10/20/01	EST/MSR

**TAX MAP**  
 BOROUGH OF TINTON FALLS  
 MONMOUTH COUNTY NEW JERSEY  
 SCALE : 1"=100'  
 PETER R. AVAKIAN, P.E. & L.S.  
 BOROUGH ENGINEER  
 788 WAYSIDE ROAD  
 NEPTUNE, N.J.

THIS PLAN REVISED AS NOTED.  
 ORIGINAL APPROVED  
 AS DIVISION MAP BY  
 N.J. DIVISION OF TAXATION  
 OCTOBER 10, 2007  
 SERIAL No. 913

THIS SHEET IS A SCANNED COPY OF THE TAX MAP  
 ON FILE IN THE OFFICE OF THE ENGINEER,  
 PETER R. AVAKIAN, P.E. & L.S., NEPTUNE, NJ

SHEET 79

SHEET 76

SHEET 84

SHEET 69



**MAZZA RECYCLING, LTD.**  
**PROPOSED INCREASE OF CLASS “A” TONNAGE**

**3230 SHAFTO ROAD, TINTON FALLS BOROUGH, MONMOUTH COUNTY, NJ**

**BLOCK 26.01, LOT 145 (52.05 acres)**

**This existing Class “B” Recycling Center facility is authorized to receive and process whole tree trunks, tree parts, tree stumps, brush, and clean (unpainted and untreated) dimensional lumber, tires, concrete, and asphalt under authority of a Class “B” Recycling permit issued by the NJDEP. The operator of this facility also operates a solid waste transfer station which accepts 1100 tons per day of type ID 13 and type ID 13C solid wastes.**

**The operators of this facility wish to add additional tonnage of Class “A” material to be accepted at their facility (an additional 190 tons to bring the total class a tonnage from 110 tons per day to 300 tons per day.**

**If approved for inclusion in the Solid Waste Management Plan, the facility will be able to:**

- Accept an additional one hundred and ninety tons of Class “A” material (cans, bottles, paper, cardboard, fiber) to bring the facility’s total tonnage of this material to three hundred (300 tons per day)**

**Hours of Operation (will not change):**

**May 1- September 15**

**Monday through Friday (6:00 am – 5:00 pm)**

**Saturday (6:00 am – 1:00 pm)**

**September 16- April 30**

**Monday through Friday (7:00 am – 4:00 pm)**

**Saturday (7:00 am – 1:00 pm)**

As part of the inclusion in the Solid Waste Management Plan, the County will be signing a developer's agreement with the applicant. This agreement sets forth language by which the developer (Mazza Recycling, Ltd.) will be required to install a traffic signal and make the associated improvements at the intersection of Mazza Driveway and Shafto Road. This signal must be operational prior to the expansion of this facility taking effect. The facility will not be able to accept the additional tonnage until the traffic signal is verified and approved by the Monmouth County Division of Engineering.

Submitting Testimony for Public Hearing before the Board of Freeholders:

Any interested party may submit written testimony before or at the public hearing scheduled before the Board of Chosen Freeholders. At the public hearing, a court reporter will be present for a verbatim transcript of any comments.

For written material to be submitted into the record for the public hearing, the material can be sent to the Solid Waste Coordinator prior to the public hearing or up until 1:00 pm on November 21, 2017. Please submit this written material to the County Solid Waste Coordinator at the address noted below. For written material submitted at the public hearing, at least two copies should be provided. Written submittals will be appended to the public hearing transcript and copies provided to the NJDEP along with any resolution that may be adopted by the Board regarding the inclusion of the proposed facility or expansion in the Monmouth County Solid Waste Plan.

Availability of Background Documents/Testimony for Public Review:

Anyone wishing to review the application and associated materials that were submitted by Mazza Recycling, LTD. to the County, testimony or correspondence submitted to the Solid Waste Advisory Council (SWAC), meeting minutes, staff correspondence or any other information concerning this proposed facility, may inspect the project file available at the office of the Solid Waste Coordinator at the Monmouth County Department of Public Works and Engineering. Appointments are recommended; please contact the Solid Waste Coordinator at the address/phone number/email address provided below. There is a fee charged for any photocopying requested.

Stuart Newman, Solid Waste Coordinator  
Monmouth County Department of Public Works and Engineering  
Monmouth County Reclamation Center  
6000 Asbury Avenue,  
Tinton Falls, NJ 07753  
Phone: (732) 683-8686 ext. 8961  
Email address: [stuart.newman@co.monmouth.nj.us](mailto:stuart.newman@co.monmouth.nj.us)